

# SensePoint

"The Art of Gas Detection"

The **SensePoint** gas detector is R.C. Systems' newest solution for single point monitoring with local alarm indication. Ideal for laboratory and commercial environments. With a bright, vivid backlit color display, Modbus and programmable relays, it will satisfy the most demanding application's requirements. The **SensePoint** gas detector supports all temperature compensated smart sensor types including Electrochemical, Catalytic Bead, Infrared and Photoionization sensors. It even has Arctic options available for extreme low temperature installations.



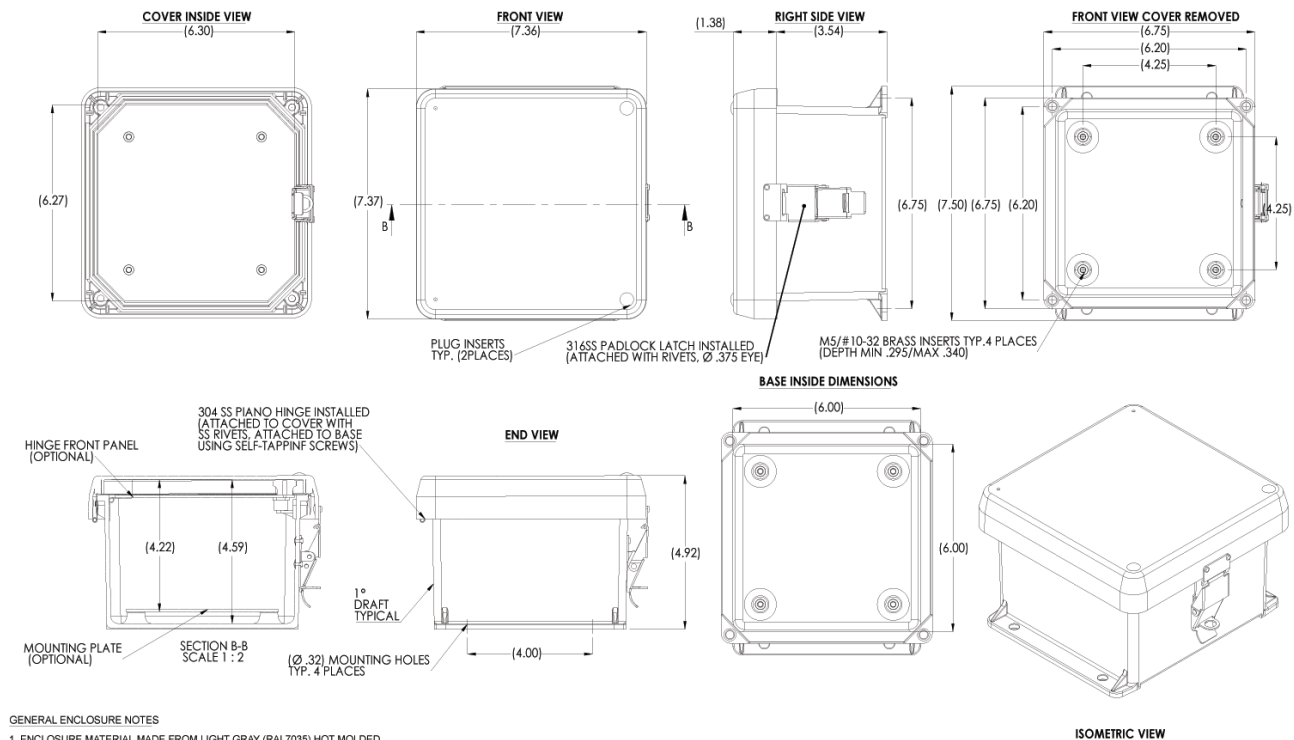
## FEATURES HIGHLIGHT:

- Color backlit LCD Display
- Display Color Changes with Alarm Status
- Generation 2 Smart Sensor Compatible for increased signal stability
- Sensor Life Indication
- Remote Sensor Option
- Non-intrusive One-Man Calibration
- Temperature Compensation
- RS-485 Modbus Port
- 2 Programmable Relays and Fault Relay standard
- Heated elements available for low temperature
- Multi color visual alarm indicator
- Audible alarm indicator

## SPECIFICATIONS

<b>Power Supply</b>	Input: 110/230 VAC, Output: 24 VDC at 15 watts
<b>Display</b>	128x64 pixel color backlit LCD display
<b>Sensor Input</b>	Electrochemical, Catalytic Bead, Infrared, Photoionization Detector sensor; Modbus, 4-20mA
<b>Output</b>	3-wire 4-20mA current source. Max loop Resistance 600 ohms @ 24VDC Two programmable relays plus dedicated FAULT relay Dual master / slave MODBUS RS-485 serial interfaces
<b>Environmental</b>	Operating range -40°C to +60°C Sensors include sensor heater for low temperature operation Relative humidity to 95% for IR; to 85% noncondensing when using electrochemical sensors
<b>Housing</b>	NEMA 4x Fiberglass
<b>Dimensions</b>	[Outside] Width 7.31" (186 mm), Height 7.31" (186 mm), Depth 4.96" (126 mm) [Inside] Width 6" (152 mm), Height 6" (152 mm), Depth 4.10" (104 mm) Shipping weight 6.5 pounds (3 kg)
<b>Audible</b>	94 dB at 1 meter
<b>Warranty</b>	Up to 5 years * see standard warranty clause on our website

ALL DIMENSIONS IN INCHES



- GENERAL ENCLOSURE NOTES
- ENCLOSURE MATERIAL MADE FROM LIGHT GRAY (RAL7035) HOT MOLDED FIBERGLASS REINFORCED POLYESTER.
  - U.L. LISTED PER STD. 508 (FILE# E192121) PRIOR TO MODIFICATIONS.
  - C.S.A. CERTIFIED PER STD. C22.2 No 94 (FILE# LR36508) PRIOR TO MODIFICATIONS.
  - N.E.M.A. RATED TYPE 3, 3R, 4, 4X, 12 & 13 PRIOR TO MODIFICATIONS.
  - E.C.-529 RATED IP66 PRIOR TO MODIFICATIONS.
  - TEMPERATURE RANGES FROM -50°C TO 150°C.
  - SELF EXTINGUISHING AND HALOGEN FREE.
  - CABINETS ARE MAINTENANCE FREE & CORROSION RESISTANT.